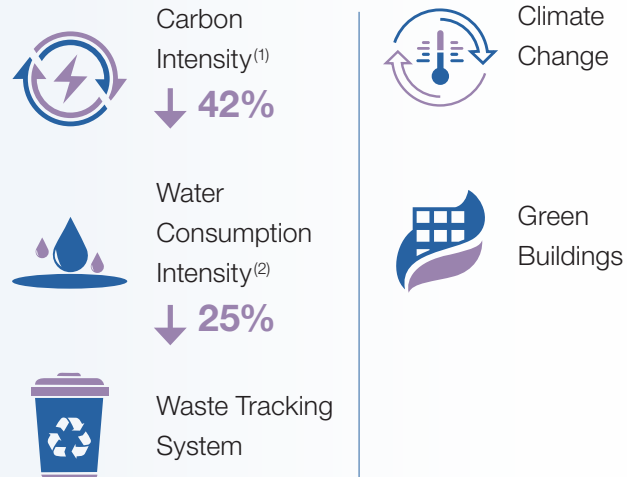


# 2030 Environment, Social, Governance Targets and 2022 Progress

## Highlights of 2030 ESG Targets



### Environment



### Social



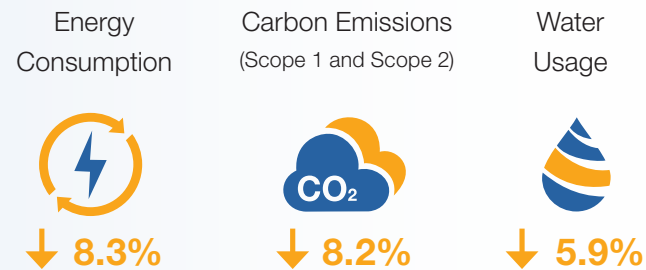
### Governance



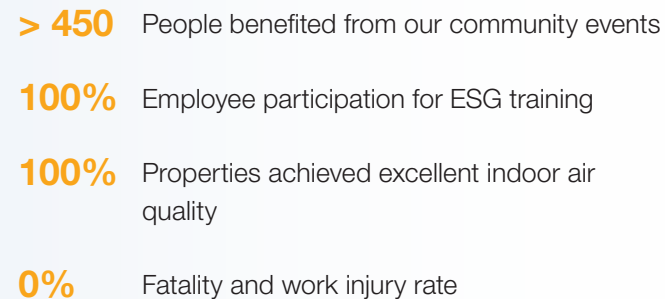
## Key Performance Indicators of 2022



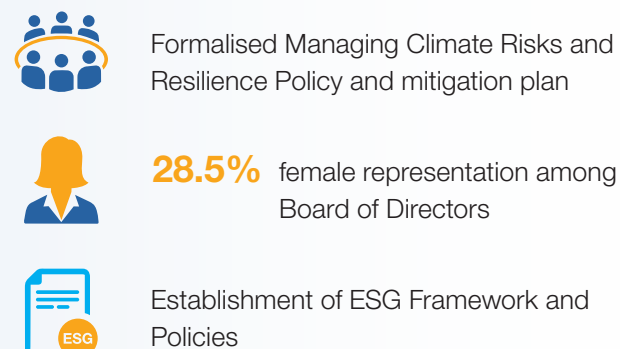
### Environment Data



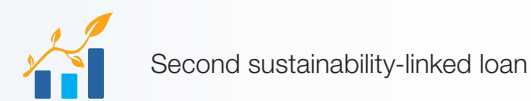
### Social Data



### Governance Highlights



### Sustainable Financing



## Sustainability Strategy



"Embracing sustainability helps us **better prepare for future, identify risks and opportunities, ultimately creating sustainable** values for our business, stakeholders and community as a whole."



## Sustainability Awards



### Hong Kong Management Association

Hong Kong Sustainability Award 2022

- Distinction Award
- Special Award - Excellence in Social Sustainability Initiative
- Special Award - Excellence in Innovation
- Special Award - Excellence in Pandemic Resilience



### Bloomberg Businessweek Chinese Edition

ESG Leading Enterprise Awards 2022

- ESG Leading Enterprise Award
- Theme Award: Crisis Management



### Hong Kong ESG Reporting Awards (HERA)

2022 HK ESG Reporting Award

- Outstanding ESG Improvement Commendation Award



### Hong Kong Management Association

Best Annual Report Award 2022

- Certificate of Excellence in Environmental, Social and Governance Award

## Green Buildings and International Benchmark



### GRESB Real Estate Assessment

2022 Green Star Recognition;  
Grade A Rating on Public Disclosure



### Hang Seng Corporate Sustainability Index Series

Constituent of Hang Seng Corporate Sustainability Benchmark Index for seven consecutive years  
(Top 10% among the assessment universe)



### WELL Building Core & Shell Platinum

- Three Garden Road



### BEAM Plus Existing Building Platinum

- Langham Place Mall  
- Three Garden Road  
(Highest score in Hong Kong)



### EDGE Green Building Certification Scheme

Level 1: EDGE Certified  
(Langham Place Mall)

(1) Tonne CO<sub>2</sub> / square metre; compared to base year 2011  
(2) Cubic metre / square metre; compared to base year 2014  
(3) Compared to base year 2018

